

gusella-bakker.com

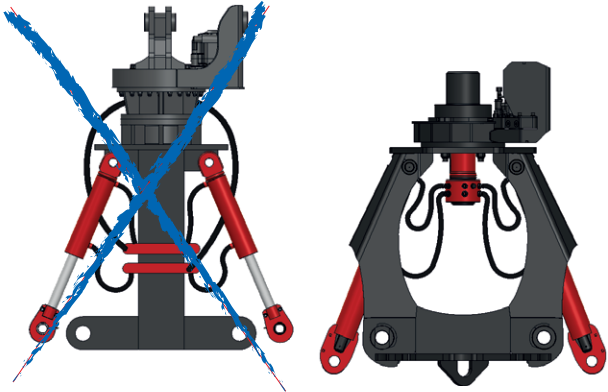
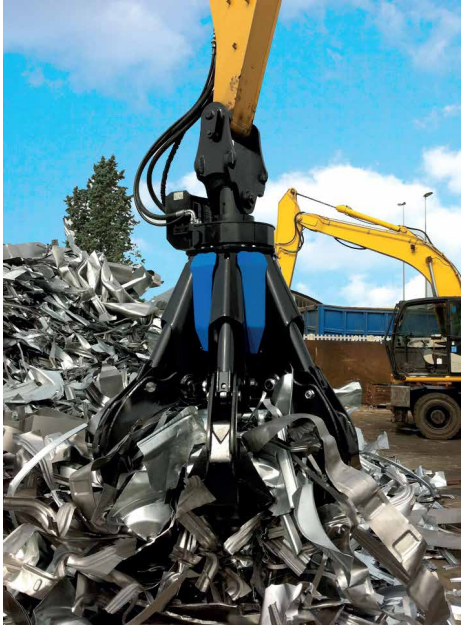
SCE ScrapKing

by GUSELLA-BAKKER



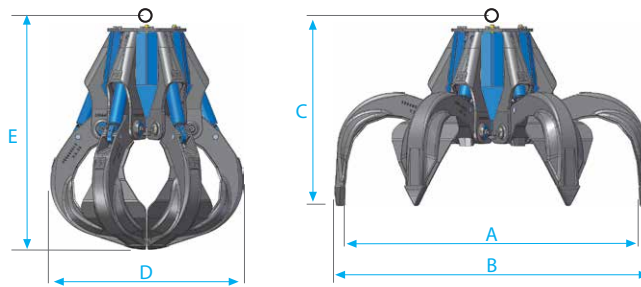
mt ton. 10,0 - 37,0

SCRAP
RUBBLE
WASTE MATERIAL



We have eliminated the necessity of a central column. Now the unique base of the Scrap King SCE Orange peel grapple is built entirely using high tensile steel. The design allows for minimum amount of welding. Therefore the structure is far more rigid than what other grapples can offer.

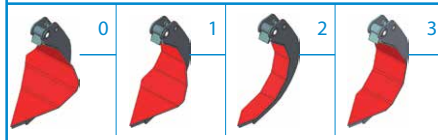
This has enabled us to create room in the centre of the base to accommodate the hydraulic components and parts of the innovative GRI rotator. Because of that our Scrap King SCE and other Orange Peel grapples we have to offer require far less height than any other prapple available on the market today.



Type of link



Type of teeth

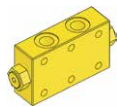


St. = Standard

Model	Link type	Teeth available		Capacity cu yd.	Weight Lb	Load mt ton	Pressure Max psi	Teeth N.	Dimensions mt ton	Dimensions				
		Standard	Special							A	B	C	D	E
SCE 404	PE	1	0-2-3	0.52	1377	3,5	5200	4	10-18	72	79	41	49	53
SCE 404	K (16 ton)	1	0-2-3	0.52	1664	3,5	5200	4	10-18	72	79	50	49	63
SCE 404	E (12 ton)	1	0-2-3	0.52	1796	3,5	5200	4	10-18	72	79	52	49	64
SCE 405	PE	1	0-2-3	0.52	1543	3,5	5200	5	10-18	72	79	41	49	53
SCE 405	K (16 ton)	1	0-2-3	0.52	1878	3,5	5200	5	10-18	72	79	50	49	63
SCE 405	E (12 ton)	1	0-2-3	0.52	2127	3,5	5200	5	10-18	72	79	52	49	64
SCE 406	PE	0	1-2-3	0.52	1918	3,5	5200	6	10-20	72	79	41	49	53
SCE 406	K (16 ton)	0	1-2-3	0.52	2065	3,5	5200	6	10-20	72	79	50	49	63
SCE 406	E (12 ton)	0	1-2-3	0.52	2314	3,5	5200	6	10-20	72	79	52	49	64
SCE 504	PE	1	0-2-3	0.63	1851	5	5200	4	12-18	76	84	47	53	59
SCE 504	E (12 ton)	1	0-2-3	0.63	2347	5	5200	4	12-18	76	84	58	53	70
SCE 505	PE	1	0-2-3	0.63	2160	5	5200	5	14-18	76	84	45	53	59
SCE 505	E (12 ton)	1	0-2-3	0.63	2656	5	5200	5	14-18	76	84	58	53	70
SCE 506	PE	0	1-2-3	0.63	2469	5	5200	6	14-20	76	84	45	53	59
SCE 506	E (12 ton)	0	1-2-3	0.63	2965	5	5200	6	14-20	76	84	58	53	70
SCE 554	PE	1	0-2-3	0.72	2019	5,5	5200	4	15-23	80	88	48	56	63
SCE 554	E (12 ton)	1	0-2-3	0.72	2477	5,5	5200	4	15-23	80	88	59	56	73
SCE 555	PE	1	0-2-3	0.72	2288	5,5	5200	5	17-24	80	88	48	56	63
SCE 555	E (12 ton)	1	0-2-3	0.72	2733	5,5	5200	5	17-24	80	88	59	56	73
SCE 556	PE	0	1-2-3	0.72	2700	5,5	5200	6	18-24	80	88	48	56	63
SCE 556	E (12 ton)	0	1-2-3	0.72	3196	5,5	5200	6	18-24	80	88	59	56	73
SCE 604	PE	1	0-2-3	0.78	2872	6,5	5200	4	18-28	83	90	57	58	69
SCE 604	E (12 ton)	1	0-2-3	0.78	3368	6,5	5200	4	18-28	83	90	66	58	79
SCE 604	E1 (20 ton)	1	0-2-3	0.78	3657	6,5	5200	4	18-28	83	90	67	58	82
SCE 605	PE	1	0-2-3	0.78	3348	7	5200	5	19-32	83	90	57	58	69
SCE 605	E (12 ton)	1	0-2-3	0.78	3813	7	5200	5	19-32	83	90	66	58	79
SCE 605	E1 (20 ton)	1	0-2-3	0.78	4133	7	5200	5	19-32	83	90	67	58	82
SCE 606	PE	0	1-2-3	0.78	3911	8	5200	6	22-32	83	90	57	58	69
SCE 606	E (12 ton)	0	1-2-3	0.78	4365	8	5200	6	22-32	83	90	66	58	79
SCE 606	E1 (20 ton)	0	1-2-3	0.78	4695	8	5200	6	22-32	83	90	67	58	82
SCE 804	PE	1	0-2-3	1.05	3556	8	5200	4	22-32	93	99	57	65	73
SCE 804	E (12 ton)	1	0-2-3	1.05	3813	8	5200	4	22-32	93	99	68	65	84
SCE 804	E1 (20 ton)	1	0-2-3	1.05	4340	8	5200	4	22-32	93	99	70	65	87
SCE 805	PE	1	0-2-3	1.05	3844	9	5200	5	24-35	93	99	57	65	73
SCE 805	E (12 ton)	1	0-2-3	1.05	4299	9	5200	5	24-35	93	99	68	65	84
SCE 805	E1 (20 ton)	1	0-2-3	1.05	4629	9	5200	5	24-35	93	99	70	65	87
SCE 806	PE	0	1-2-3	1.05	4140	9	5200	6	27-37	93	99	57	65	73
SCE 806	E (12 ton)	0	1-2-3	1.05	4636	9	5200	6	27-37	93	99	68	65	84
SCE 806	E1 (20 ton)	0	1-2-3	1.05	4925	9	5200	6	27-37	93	99	70	65	87

Weight classes refer to standard teeth

OPTIONS



Check valve



Excavator link (AG 120-200)



Easy link for excavators (AG 121-201)



Suspension plate male (AA 120)



Mechanical rotator (AD 120)



Active Control Grip

This data are indicative. To choose the correct attachment check also excavator lifting capacities.



10041 Carignano (To) Italy
Via Cagliari, 17
Tel. +39 011 0133406

6662 NG Elst (Gld) Netherlands
Nijverheidsweg 6
Tel. +31 (0)481-374757

info@gusella-bakker.com